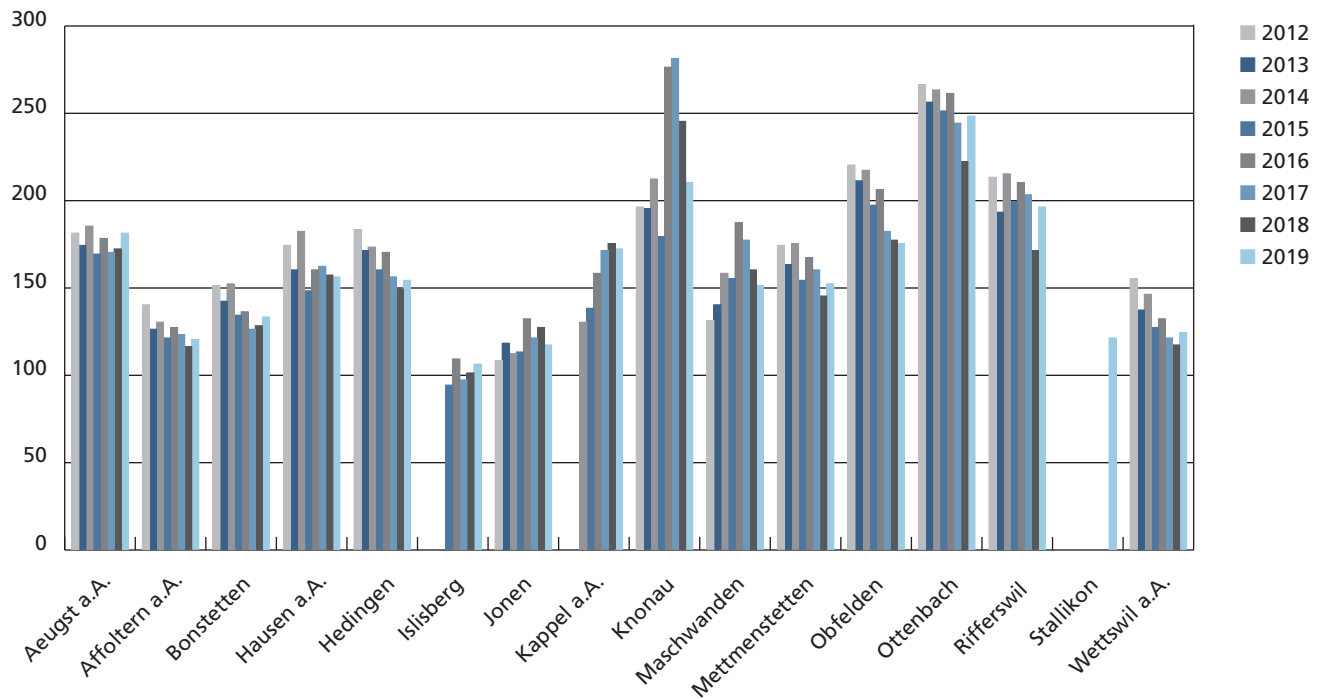


Kompostierbare Küchen- und Gartenabfälle pro Einwohner in Kilogramm 2012 – 2019



Kompostierbare Küchen- und Gartenabfälle pro Einwohner 2012 – 2019

| Gemeinden | 2012 | 2013 | 2014 | 2015 | 2016 | 2017 | 2018 | 2019 |
|--------------------------|--------------|---------------|---------------|---------------|---------------|---------------|---------------|---------------|
| Aeugst a.A. | 181 | 174 | 185 | 169 | 178 | 170 | 172 | 181 |
| Affoltern a.A. | 140 | 126 | 130 | 121 | 127 | 123 | 116 | 120 |
| Bonstetten | 151 | 142 | 152 | 134 | 136 | 126 | 128 | 133 |
| Hausen a.A. | 174 | 160 | 182 | 148 | 160 | 162 | 157 | 156 |
| Hedingen | 183 | 171 | 173 | 160 | 170 | 156 | 149 | 154 |
| Islisberg | | | | 94 | 109 | 97 | 101 | 106 |
| Jonen | 108 | 118 | 112 | 113 | 132 | 121 | 127 | 117 |
| Kappel a.A. | | | 130 | 138 | 158 | 171 | 175 | 172 |
| Knonau | 196 | 195 | 212 | 179 | 276 | 281 | 245 | 210 |
| Maschwanden | 131 | 140 | 158 | 155 | 187 | 177 | 160 | 151 |
| Mettmenstetten | 174 | 163 | 175 | 154 | 167 | 160 | 145 | 152 |
| Obfelden | 220 | 211 | 217 | 197 | 206 | 182 | 177 | 175 |
| Ottenbach | 266 | 256 | 263 | 251 | 261 | 244 | 222 | 248 |
| Rifferswil | 213 | 193 | 215 | 199 | 210 | 203 | 171 | 196 |
| Stallikon | | | | | | | | 121 |
| Wettswil a.A. | 155 | 137 | 146 | 127 | 132 | 121 | 117 | 124 |
| Durchschnittswert | 169.6 | 158.14 | 169.32 | 150.76 | 163.39 | 155.28 | 148.00 | 148.55 |